

# Age Friendly Edmonton 2.0

## Mobilizing for Community Impact

---

Ingrid Hoogenboom, City of Edmonton  
&  
Sheila Hallett, ESCC  
Grey Matters Conference September 12, 2017



# Presentation overview

---

- ❖ Lessons Learned 2013-17
- ❖ Advancing Age Friendly Edmonton process
- ❖ AFE 2.0



# Lessons Learned: Structure

58 Goals	<b>Lessons:</b> <ul style="list-style-type: none"><li>● Overly ambitious!</li><li>● Not SMART Goals</li></ul>
Working Groups	<b>Lessons:</b> <ul style="list-style-type: none"><li>● Right people at the table</li><li>● Extra work</li><li>● Silos</li><li>● Who does the actual work?</li></ul>
Steering Committee	<b>Lessons:</b> <ul style="list-style-type: none"><li>● Regular communication to find intersections of work is critical</li></ul>

# Lessons Learned: Leadership

---

Leading the AFE initiative

**Lessons:**

- No formal partnership agreement until 2016
- How you partner needs as much time/resources/attention as the project work

Leading AFE projects

**Lessons:**

- Backbone organization involves project management, coordination and implementation
- Identify what relates most to your mandate

# Lessons Learned: Implementation

Getting it done	<b>Lessons:</b> <ul style="list-style-type: none"><li>● People, people, people!</li></ul>
No evaluation resources	<b>Lessons:</b> <ul style="list-style-type: none"><li>● Imperative to measure process and product in order to maintain community and political support</li></ul>
“Low-hanging fruit” first concept	<b>Lessons:</b> <ul style="list-style-type: none"><li>● Plan actions in “phases”</li><li>● Awareness, programs, or systems/policy?</li></ul>



# Advancing Age Friendly Edmonton Process

---

- ❖ Think Tanks
- ❖ Priority Matrix
- ❖ Public Engagement

# Think Tank Sessions: Fall 2016

---

1

Seniors have access to what they need, when they need it

2

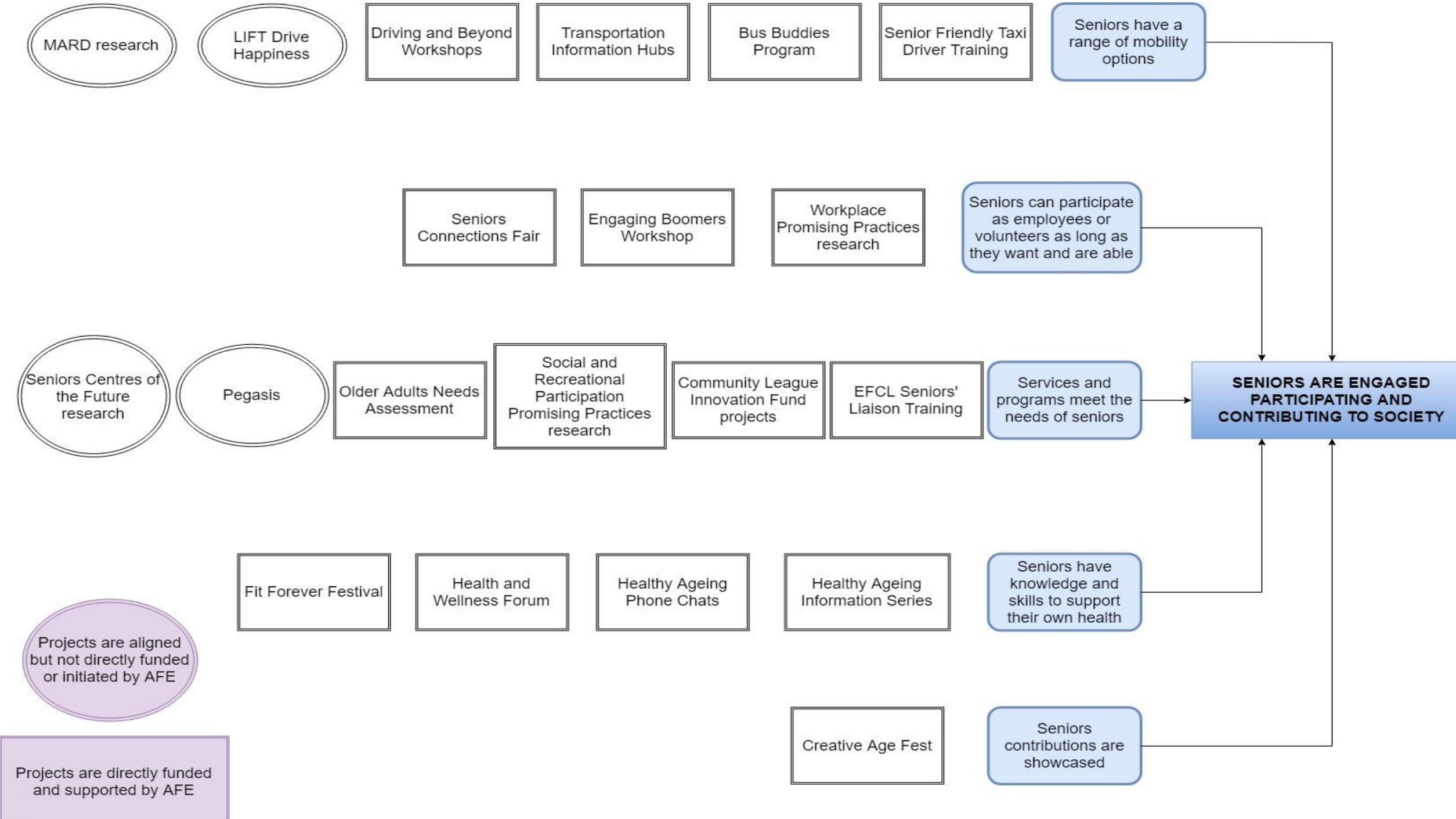
Seniors are respected and included

3

Seniors are engaged, participating, and contributing to society

4

Seniors are safe and well in their homes and communities







# Priority Matrix

---

## ***So what do we do now?***

*10 possible priority areas were identified*

- Housing
- Caregiver support
- Ageism
- Safety
- Diversity
- Intergenerational
- Mobility
- Aging in Place
- Accessibility of Spaces and Places



# Priority Matrix

---

## *Scoring Criteria*

### “Quantitative”

- Evaluation indicators exist (Y/N)
- Potential partners exist (Y/N)
- Influence or Driver
- Related to WHO Active Aging Framework (Y/N)

### “Qualitative”

- Previous AFE project
- Readiness for change
- Inputs required
- Scale of Impact
- Where change would occur
- Connects to AFE 1.0 Domain Area



# Priority Matrix

---

- ❖ Refer to the handout for example

# Public Engagement

---

- Think Tanks results and Priority Matrix were used to identify top priorities:



**AGING IN PLACE**



**INTERGENERATIONAL**

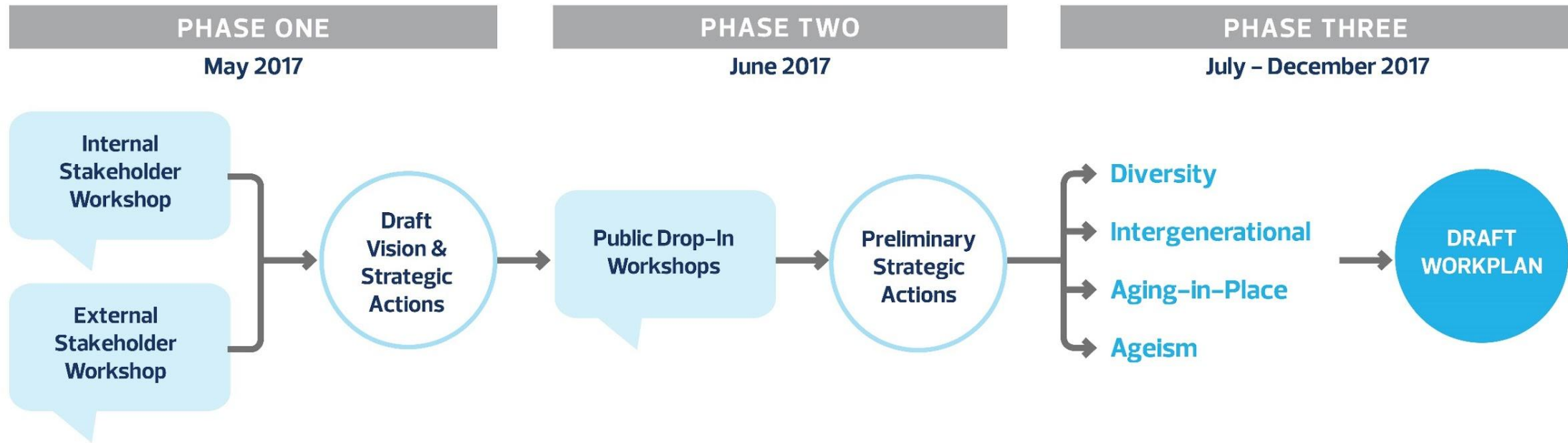


**DIVERSITY**



**AGEISM**

# Public Engagement



# Public Engagement

## AGE FRIENDLY EDMONTON

BY THE NUMBERS

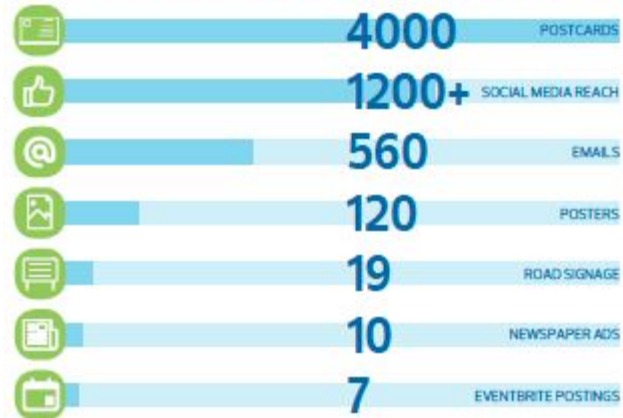
OVER **800** IDEAS

POST-IT NOTE INSPIRATIONS AND IDEAS, PINNED TO OUR INTERACTIVE DISPLAY PANELS

7 WEEKS



## GETTING THE WORD OUT





# Next Steps

---

- Continue to align to international best practices and guidelines
- Incorporate all the feedback from “Advancing Age Friendly Edmonton” to build next work plan
- Identify new partners, structures, and metrics

# Questions?

---



Age Friendly Edmonton



@agefriendlyYEG



[www.edmonton.ca/agefriendly](http://www.edmonton.ca/agefriendly)

## **Ingrid Hoogenboom**

City of Edmonton

780-496-4938 [ingrid.hoogenboom@edmonton.ca](mailto:ingrid.hoogenboom@edmonton.ca)

## **Sheila Hallett**

Executive Director, Edmonton Seniors Coordinating Council (ESCC)

780-423-5635 [sheila@seniorscouncil.net](mailto:sheila@seniorscouncil.net) ([www.seniorscouncil.net](http://www.seniorscouncil.net))